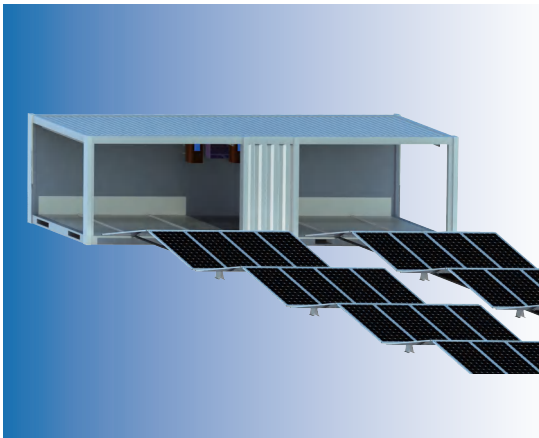


# VOLKSKRAFTANLAGE

## VKA-205-S

### Overall Configurations



Package	Package Products Model	VKA-205-S
	Solar Array Capacity (Pmax / kWp)	204.9
	Total Weight (Tons)	26.5
	Unfolded Footprint (L*W*H/m)	102*10.8*0.9
	Folded Footprint (L*W*H/m)	10.8*2.4*2.2
	Max. Slope Limit	1%
	Orientation	Any azimuth
	Complete unfolding Time (mins)	200
	Complete folding Time (mins)	120
	Installation Persons	8

#### ① Container

Module Type	40HQ
External Dimensions (L*W*H/mm)	12192*2438*2896
Container Weight (Tons)	4.8

#### ③ Inverter

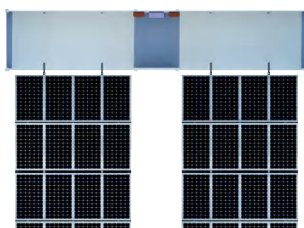
Module Type	SUN-100K-G03
Inverter Type	On grid
Quantity of inverters (sets)	2
Max.PV Power(Pmax/Wp)	150000
Nominal AC output power (W)	100000
Maximum AC output power(W)	111000
Nominal AC voltage(V)	3L/N/PE 220/380V 230/400V
AC grid frequency range(Hz)	50 / 60 (Optional)
Maximum output current(A)	166.7/159.4
Dimensions(WxHxD/mm)	838*568*324
Weight(kg)	81
Operating temperature range(°C)	-25~65°C, >45°C derating
Communication	RS485/RS232/Wifi/LAN

#### ② Solar Panel

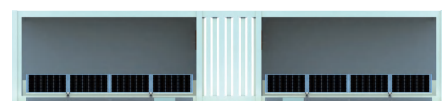
Module Type	DG610W
Max.Power(Pmax/Wp)	610
Max. Power Voltage (Vm / V)	34.98
Max. Power Current (Im / A)	17.44
Open Circuit Voltage (Voc / V)	41.52
Short Circuit Current (Isc / A)	18.40
Product Dimensions(mm)	2172*1303*35
Weight(Kgs)	34.5
Quantity of solar panels (pcs)	336

#### ④ Bracket (1/2)

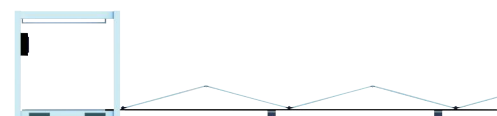
Material	Carbon steel square pipe
Material Specification	5427*2375*35
Number of single frame installation panels	4
Angle of Unfolding Bracket (°)	15
Length of Unfolding Bracket (m)	95
Project area of Unfolding Bracket (m²)	515
Quantity of bracket (page)	42



Top View



Front View



Side View

# VOLKSKRAFTANLAGE

## VKA-102-S

### Overall Configurations



Package	Package Products Model	VKA-102-S
	Solar Array Capacity (Pmax / kWp)	102.4
	Total Weight (Tons)	13.5
	Unfolded Footprint (L*W*H/m)	102*5.4*0.9
	Folded Footprint (L*W*H/m)	5.4*2.4*2.2
	Max. Slope Limit	1%
	Orientation	Any azimuth
	Complete unfolding Time (mins)	120
	Complete folding Time (mins)	80
	Installation Persons	6

#### ① Container

Module Type	20HQ
External Dimensions (L*W*H/mm)	6058*2438*2896
Container Weight (Tons)	2.5

#### ③ Inverter

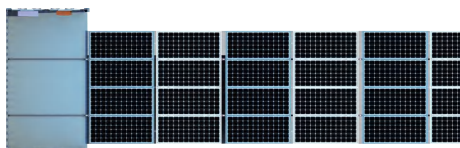
Module Type	SUN-100K-G03
Inverter Type	On grid
Quantity of inverters (sets)	1
Max.PV Power(Pmax/Wp)	150000
Nominal AC output power (W)	100000
Maximum AC output power(W)	111000
Nominal AC voltage(V)	3L/N/PE 220/380V 230/400V
AC grid frequency range(Hz)	50 / 60 (Optional)
Maximum output current(A)	166.7/159.4
Dimensions(WxHxD/mm)	838x568x324
Weight(kg)	81
Operating temperature range(°C)	-25~65°C, >45°C derating
Communication	RS485/RS232/Wifi/LAN

#### ② Solar Panel

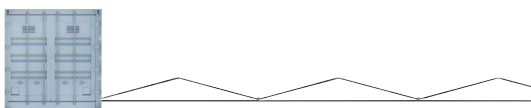
Module Type	DG610W
Max.Power(Pmax/Wp)	610
Max. Power Voltage (Vm / V)	34.98
Max. Power Current (Im / A)	17.44
Open Circuit Voltage (Voc / V)	41.52
Short Circuit Current (Isc / A)	18.40
Product Dimensions(mm)	2172*1303*35
Weight(Kgs)	34.5
Quantity of solar panels (pcs)	168

#### ④ Bracket

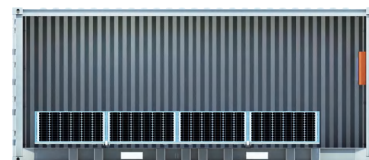
Material	Carbon steel square pipe
Material Specification	5427*2375*35
Number of single frame installation panels	4
Angle of Unfolding Bracket (°)	15
Length of Unfolding Bracket (m)	95
Project area of Unfolding Bracket (m²)	515
Quantity of bracket (page)	42



Top View



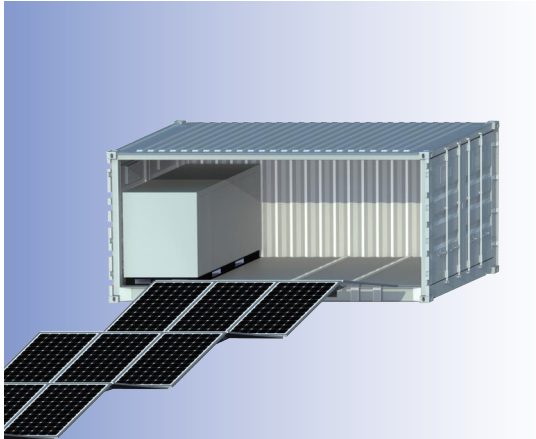
Side View



Front View

# VOLKSKRAFTANLAGE

## VKA-75-215-H



### Overall Configurations

Package	Package Products Model	VKA-75-215-H
	Solar Array Capacity (Pmax / kWp)	76.8
	Total Weight (Tons)	15.2
	Unfolded Footprint (L*W*H/m)	102*4.1*0.9
	Folded Footprint (L*W*H/m)	4.1*2.2*2.4
	Max. Slope Limit	1%
	Orientation	Any azimuth
	Complete unfolding Time (mins)	100
	Complete folding Time (mins)	80
	Installation Persons	4

#### ① Container

Type of Container	20HQ
External Dimensions (L*W*H/mm)	6058*2438*2896
Container Weight (Tons)	2.5

#### ② Solar Panel

Module Type	DG610W
Max.Power(Pmax/Wp)	610
Max. Power Voltage (Vm / V)	34.98
Max. Power Current (Im / A)	17.44
Open Circuit Voltage (Voc / V)	41.52
Short Circuit Current (Isc / A)	18.40
Product Dimensions(mm)	2172*1303*35
Weight(Kgs)	34.5
Quantity of solar panels (pcs)	126

#### ③ Energy Storage System

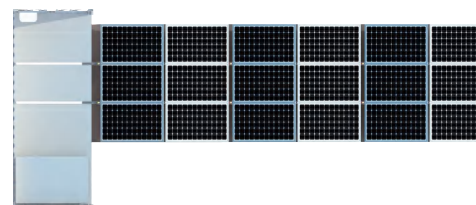
Module Type	DH200F
Cell Capacity	280Ah
Rated power	215kWh
Nominal Power(AC)	100kW
Nominal Frequency	50Hz
Battery Voltage Range	672~864V
Dimensions(WxHxD/mm)	1850*1200*2250
Weight(kg)	≈3300kg
Communication	CAN/RS485
Operating temperature range	-30°C~+50°C, (>45°C Derating)

#### ④ Bracket

Material	Carbon steel square pipe
Single Bracket Dimension (mm)	4079*2375*35
Number of single frame installation panels	3
Angle of Unfolding Bracket (°)	15
Length of Unfolding Bracket (m)	95
Project area of Unfolding Bracket (m²)	388
Quantity of bracket (page)	42

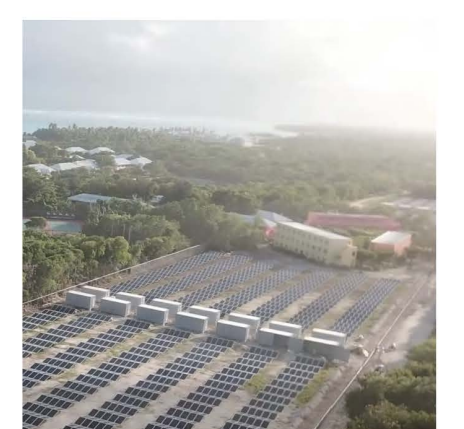
#### ⑤ Diesel Generator

Module Type	KDE16EA3
Rated output	13.8KVA
Max. output	15KVA
Rated frequency	50HZ
Rated Voltage	203/400V
Rated current	47.8A
Overall dimension(L×W×H/mm)	930*660*910
Weight(kg)	230
Quantity of DG (set)	1



Top View

## REFERENCES



**REFERENCES**

<b>S/N</b>	<b>Countries</b>	<b>Models</b>	<b>Types</b>	<b>Date</b>
1	Germany	SC-20GP-M-80K	On grid	2022.11
2	Austria	SC-20GP-M-50K SC-20GP-M-80K SC-08GP-M-18K20	On grid	2023.2
3	Poland	SC-08GP-M-18K40	Hybrid	2023.5
4	Dubai UAE	SC-20GP-M-80K	On grid	2023.12
5	KSA	SC-20HQ-M-100K	Off grid	2024.2
6	Cyprus	SC-20GP-M-50K215, SC40GP-M-100K215	Off grid	2024.8
7	China Heilongjiang	SC-08GP-M-18K20	Hybrid	2023.5
8	China Guangzhou	SC-20GP-M-80K	Hybrid	2023.10
	.....			